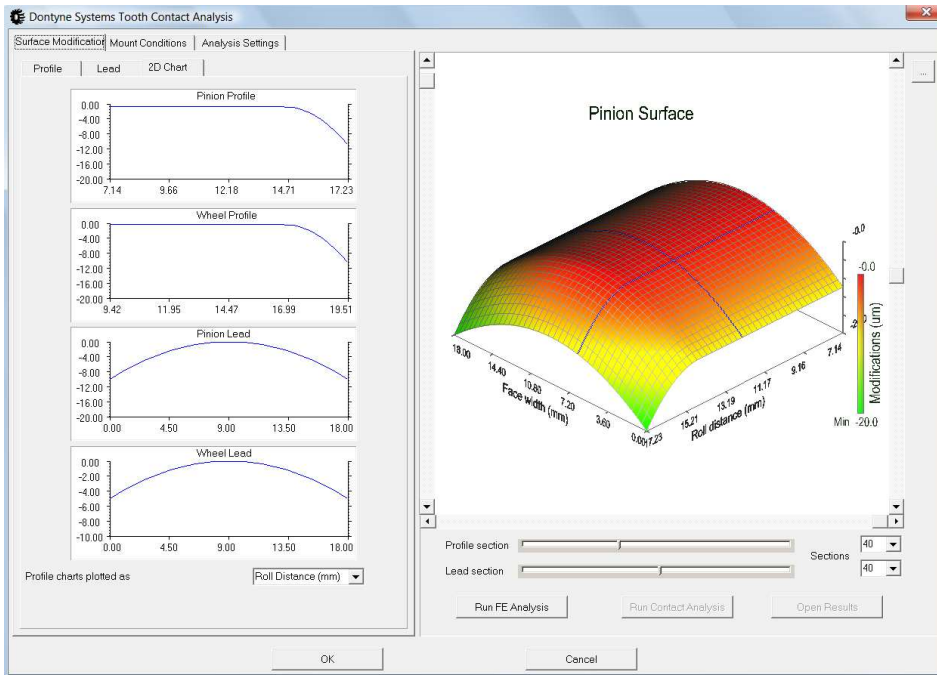
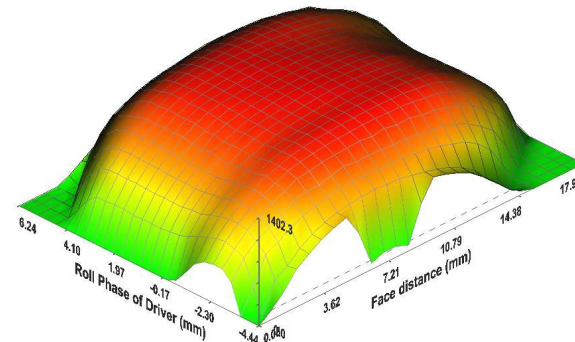


ADVANCED GEAR LOAD ANALYSIS MODEL

GATES, Gear Analysis for Transmission Error & Stress



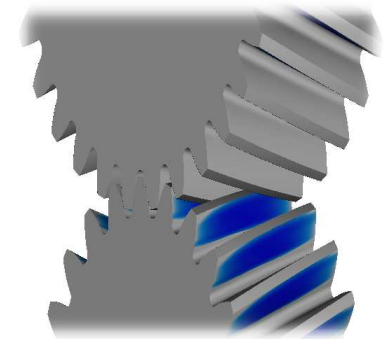
Gear contact stress



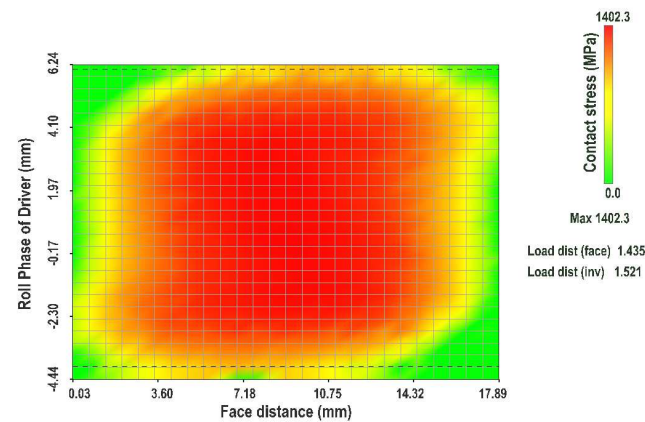
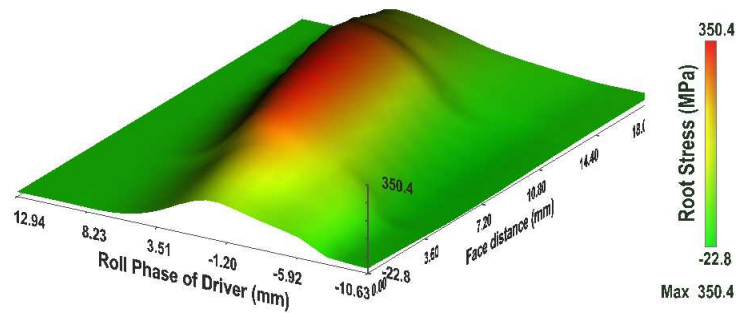
The advanced features include :-

- Surface definition, (profile & flank line modification)
- Contact stress
- Root bending stress
- 3D FE model of tooth stiffness
- Power loss and efficiency
- Surface topological modification definition
- Multiple load cases
- Double helical gears
- Effect of gear misalignment
- Various graphical interfaces
- Import of measured gear surface

Bearing load pattern

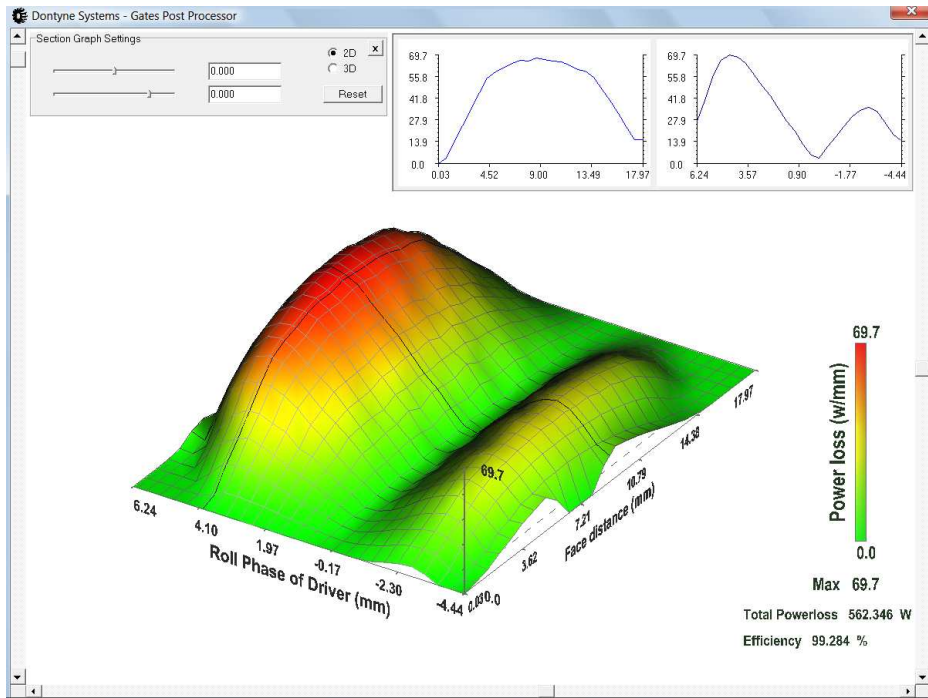


Gear root stress

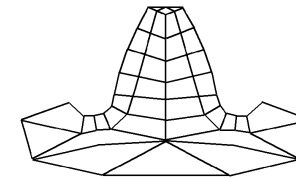


ADVANCED GEAR LOAD ANALYSIS MODEL

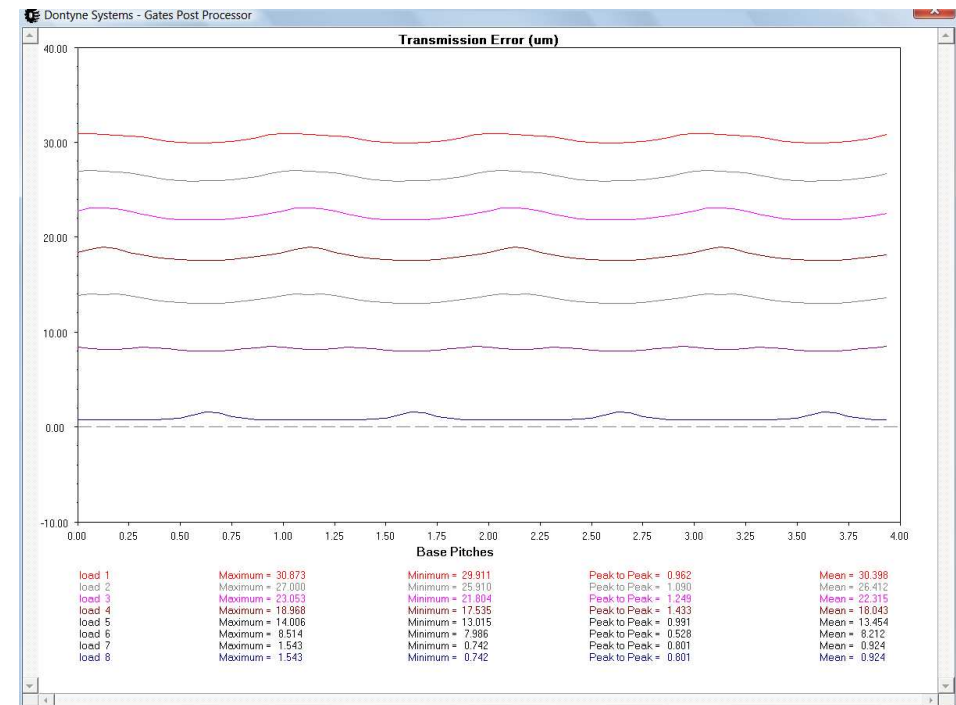
Power loss and efficiency



FE based tooth stiffness model experimentally validated on test rigs



Transmission error for varying load



Contact Details

Europe

Email : info@dontyne.com

Telephone : +44 1661 833 828

North America (In partnership with GBE - Canada)

Email : namerica@dontyne.com

Telephone : +1 416 628 8282

Asia & Australasia

Email : asia@dontyne.com

Telephone : +61 3 57950816

Dontyne
Systems

Dontyne Systems Limited is a company registered in England and Wales with company number 05973058
Registered office: 1 Simonside, Prudhoe, Northumberland, ENGLAND, NE42 6LJ
VAT Registration Number: 902 9027 45